

# Enteros UpBeat High Load Capture™



Enteros High Load Capture is an advanced software toolkit for rapid, visual root cause and scalability analysis of multi-tiered applications. Its sophisticated and efficient user interface visually correlates the performance behavior of multiple infra-structural components. With second-by-second granularity and sub-second precision, High Load Capture makes visible even the most transient performance spikes, across one or multiple systems.



## **Analyze hard-to-capture performance spikes**

Short-duration performance spikes are notoriously difficult to analyze successfully. The very short cycle time makes them effectively invisible to most performance analysis tools. Unlike other tools, High Load Capture computes performance metrics with sub-second precision, illuminating system behavior within the time interval needed to determine root cause.

## **Apply cross-tier performance forensics**

Although multi-tier applications are common, robust support for their analysis lags behind. High Load Capture removes this lag with fast, scalable correlation of performance metrics from any number of servers or back-end application tiers. High Load Capture enables operations staff to understand performance problems whose root cause contains distributed factors, especially "perfect storm" problems that can only be solved by correlation of application events at the system level.

## **Use safely, effectively and securely in production**

Enteros and eBay co-developed Enteros UpBeat High Load Capture to be used safely and effectively across business-critical production applications, especially during periods of high load, the operating regime most likely to trigger performance degradations and bottlenecks. High Load Capture employs a secure communication protocol to control and manage its performance data collection agents to uphold the security of sensitive production environments.



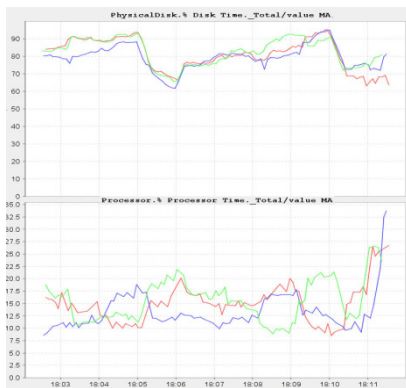
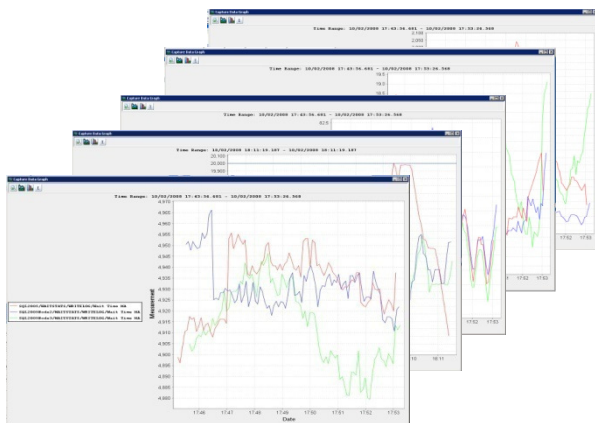
# Key Features

## Multi-threaded, high-precision collection engine

Capture performance data across production infrastructure tiers at sub-second granularity. Find the cause of performance problems of any duration, from hours to seconds in length, including short-lasting spikes invisible to other collection systems.

## Cross-tier correlation console

Perform visual or textual correlation of performance statistics from any number of servers. Identify problems arising from interaction between two or more application tiers.



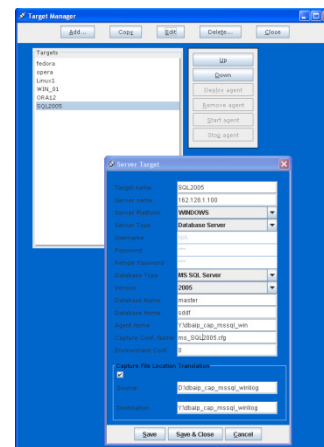
SQL2005/WIN_OS_STATS/PhysicalDisk.% Disk Time_Total/value				
Measurement	Top Value	Average	Count	
SQL2005/WIN_OS_STATS/PhysicalDisk.% Disk Time_Total/value	100.0	82.35833333333333	120	

SQL2003Node2/WIN_OS_STATS/PhysicalDisk.% Disk Time_Total/value				
Measurement	Top Value	Average	Count	
SQL2003Node2/WIN_OS_STATS/PhysicalDisk.% Disk Time_Total/value	100.0	79.17355371900827	121	

SQL2003Node3/WIN_OS_STATS/PhysicalDisk.% Disk Time_Total/value				
Measurement	Top Value	Average	Count	
SQL2003Node3/WIN_OS_STATS/PhysicalDisk.% Disk Time_Total/value	100.0	79.75	120	

## Extensible, dynamically configurable, centrally controlled collection agents

Deploy collection agents with ease and speed through the Target Manager, your single, centralized point of agent control. Reconfigure deployed collection agents dynamically, in real-time. Create and deploy custom collection agents to capture performance data on proprietary hardware and software, and communication protocols.



## Comprehensive library of collector agents

Collect database metrics, OS metrics, application server metrics as well as results generated by custom scripts and SQLs.



## Load-sensitive collection controller

Minimize overhead from performance data collection in the production environment with High Load Capture's sophisticated collection controller. The controller transparently and dynamically focuses collection activity on identified issues or spikes.

## Safe, secure agent communication

Communicate securely with agents over High Load Capture's customized SSH/SSL protocol.



# High Load Capture Summary

## Summary of Benefits

- Analyze hard-to-capture performance spikes
- Apply cross-tier performance forensics
- Use safely, effectively, and securely in production

## Summary of Features

- Multi-threaded, high-precision collection engine
- Cross-tier correlation console
- Extensible, dynamically configurable, centrally controlled collection agents
- Comprehensive library of collector agents
- Load-sensitive collection controller
- Safe, secure agent communication

## Supported Infrastructure

### Server Operating Systems

- Linux
- Windows
- Sun Solaris
- HP/UX
- AIX

### Client Operating Systems

- Windows XP/7
- Windows 2003/2008 Server
- Linux

### Databases

- Oracle and Oracle RAC 9i, 10g, 11g
- SQL Server 2000, 2005, 2008
- Sybase 11.x, 12.x, 15.x
- MySQL

### Application Servers

- Java application servers
- .NET application servers

## Integral Part of Enterprise Production Performance Management (EPPM) Platform

High Load Capture is an integral part of Enteros' innovative EPPM platform that supports performance problem management across the enterprise over all stages of the performance problem lifecycle. The complete EPPM platform includes **Grid2Go™** for proactive, fine-grain, multi-application performance problem identification; **DBAct™** for real-time performance problem remediation of databases; **Performance Explorer-i™** for rapid, graphical root cause, change impact and scalability analysis of databases; **High Load Capture™** for rapid, graphical root cause and scalability analysis of multi-tiered applications; and **Load2Test™** for performance validation with integrated load testing and load test root cause analysis.

## About Enteros

Enteros helps our customers reduce and mitigate the risk of business-impacting outages and degradations caused by enterprise performance issues. We have the only comprehensive software platform focused entirely on Enterprise Production Performance Management and proven to increase the availability of business-critical systems at companies like eBay, Yahoo, and Adobe. In business since 2004, Enteros is privately held. Our headquarters are located in Sunnyvale, Silicon Valley, CA

*For more information contact us by phone, email or web.*

<b>Phone (Toll Free)</b>	+1 (866) 529-1981
<b>Phone (Local)</b>	+1 (408) 824-1292
<b>Email</b>	<a href="mailto:info@enteros.com">info@enteros.com</a>
<b>Web</b>	<a href="http://www.enteros.com">www.enteros.com</a>

